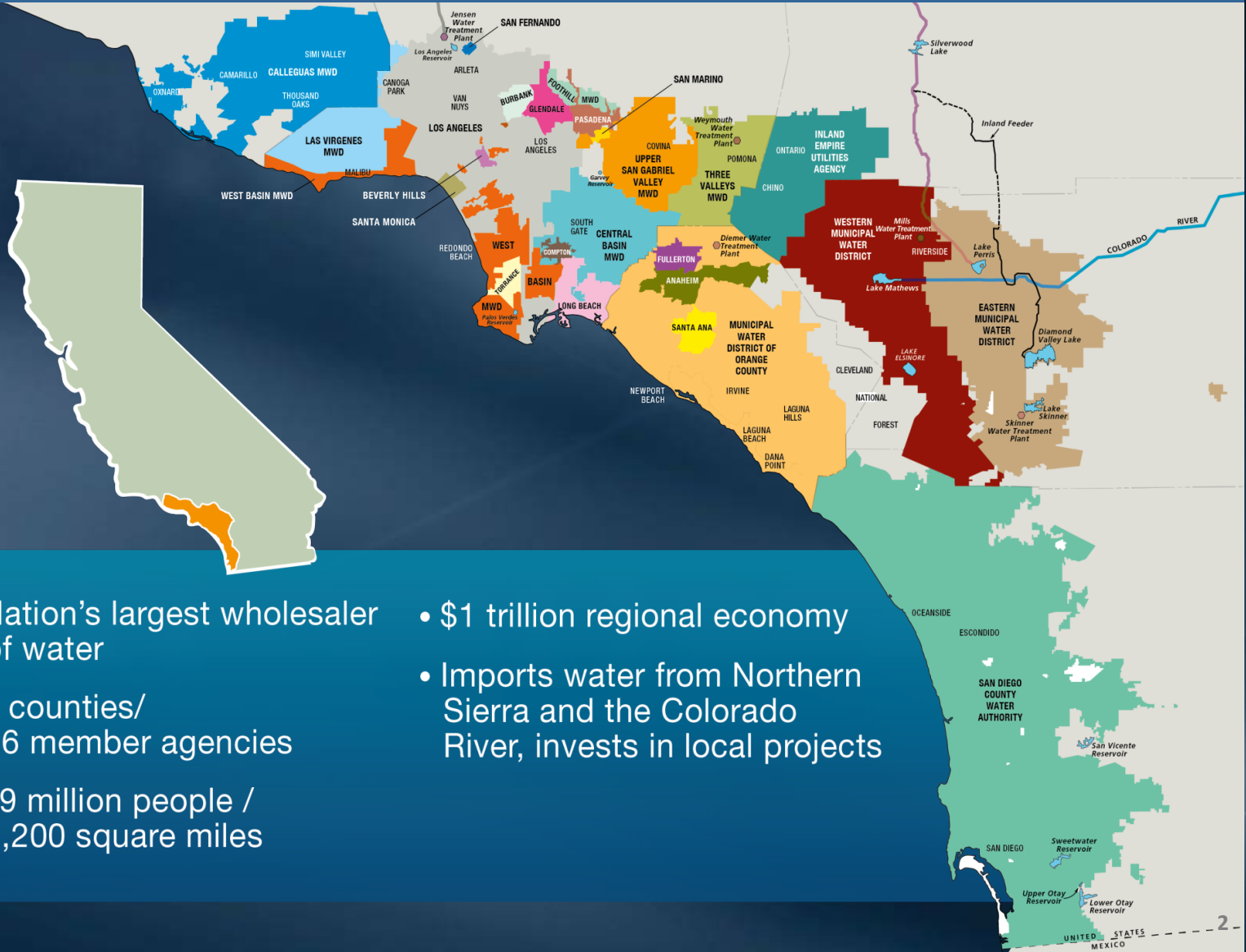


The Metropolitan Water District of Southern California

www.mwdh2o.com
bewaterwise.com



The Metropolitan Water District of Southern California



- Nation's largest wholesaler of water
- 6 counties/
26 member agencies
- 19 million people /
5,200 square miles
- \$1 trillion regional economy
- Imports water from Northern Sierra and the Colorado River, invests in local projects

Small Business Program Updates

- Equity in Infrastructure Pledge
- Project Labor Agreement
- Metworks
- Program Overview
- Certification

Equity in Infrastructure Program Pledge

Five “Mover” Agencies, including Metropolitan invited to join a new nationwide effort to increase opportunities for Historically Underutilized Businesses (HUB)

First meeting with Biden Administration officials, and labor was in Washington, DC in December 2021



Goals of the Initiative

Funding and financing for
community wealth
building

Administrative and
certification alignment

Direct contracting
by procuring agencies

- Support Biden Administration's Justice40 Initiative and increase federal-state-local partnerships for infrastructure funding and financing to improve DBE procurement
 - Increase access and reduce barriers for disadvantaged business enterprises
 - Deliver 40% of investments in climate and clean energy to disadvantaged communities

Project Labor Agreement

Business Outreach Benefits

- Unique core employee flexibility for non-union SBEs/DVBES with 25 or less employees
- “Covered Project list” approach creates opportunities for SBEs/DVBES to bid on projects that are not covered by the PLA
- Additional resources through the PLA administration team to support SBEs and DVBES with PLA training and education
- Provide Metropolitan with lists of union SBEs/DVBES for outreach with the objective of increasing the participation of union-signatory SBEs and DVBES

Metropolitan Business Outreach Program

MetWorks@mwdh2o.com

- Established in 2001 - By Board of Directors
- SBE Goal set at 25%
 - For Contracts over \$100,000
 - Contract won by Non-SBE tracked
 - MWD does not have a "Good faith effort"
- PlanetBids Platform
- SBE/DVBE Registration & Certification
- Free and takes roughly 30 minutes
- Reciprocity with DGS
- Primes access to view SBE Database

What is a Small Business

MetWorks@mwdh2o.com

- SBA **guidelines** based upon industry
- Annual Gross Sales Receipts averaged over three (3) years, or
- Number of Employees:
 - **Engineering Services** - \$16.5 M
 - **Construction** – \$39.5 M
 - **Wholesale/Retail** - 500 employees
 - **Computer Systems Services** - \$30 M
 - **State of CA** - \$15 M and < 100 employees
 - We count all tiers including supplies, subcontractors, & support services on the project towards meeting our goal

Outreach & Engagement

Metworks

- Collaboration between Engineering and Business Outreach
- Virtual workshop launched in November 2021
- Semi-Annual In Person Networking event
- Overview of Pure Water Program, Alternative Delivery Method and Project Forecast

METWORKS

Metropolitan Contracting Information Straight from the Source

Stay Mobile

Stay Connected

Keep up with the latest METWORKS updates, news, upcoming projects, events and more. Simply SCAN the QR code to STAY CONNECTED!

Send

Powered By

QR Code



THE METROPOLITAN WATER DISTRICT
OF SOUTHERN CALIFORNIA

Registration and SBE Certification:

Log Into www.mwdh2o.com/businessoutreach

The Metropolitan Water District of Southern California

Vendor Portal



NEW VENDOR REGISTRATION

Create a new vendor record.
If you wish to view or edit an existing vendor,
simply Log In.



BID OPPORTUNITIES

Search and bid electronically on opportunities
with this agency, download documents, and
become a prospective bidder.



MY CONTRACTS

Manage your awarded contracts, record
payments, add subcontractors, produce reports
and charts.

LOGIN REQUIRED



CERTIFIED VENDORS

Find Certified Small Businesses

LOGIN REQUIRED



CONTRACTS

View public information regarding agency
contracts.

LOGIN REQUIRED



MY INSURANCE

View and fulfill insurance requests /
requirements.

LOGIN REQUIRED

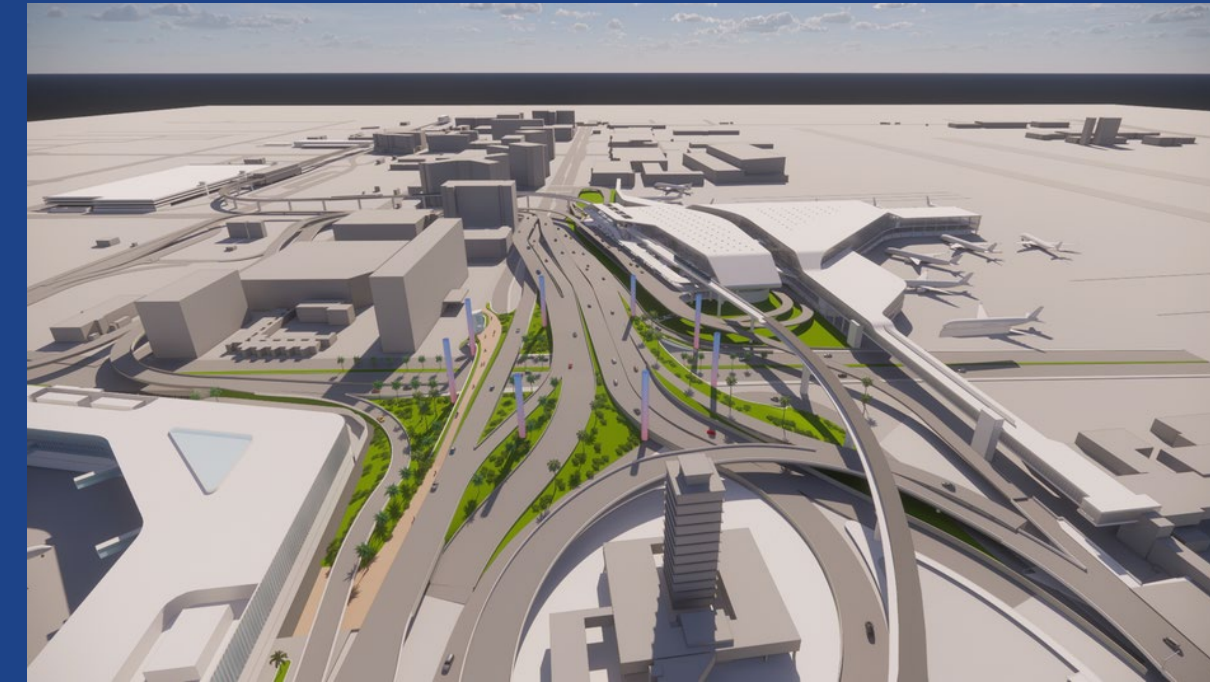
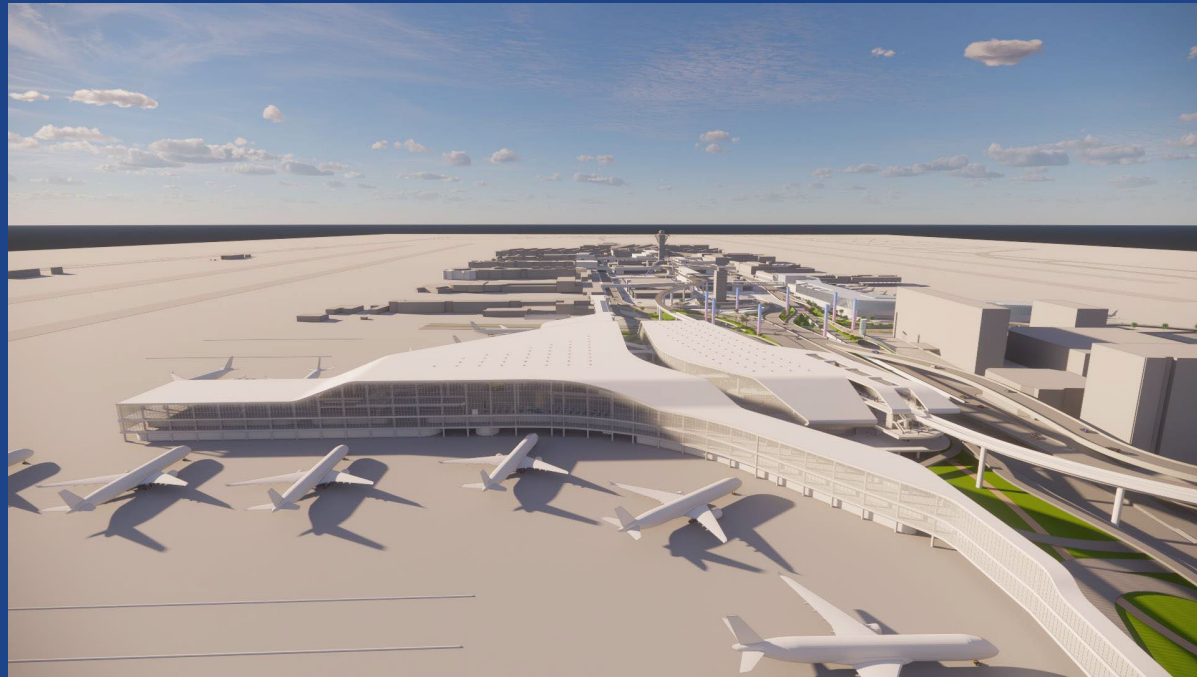


Questions?



\$30 Billion Capital Improvement Program

Maximizing Small Business Participation



UCON Public Works Summit

MARCH 20, 2023

LAX

2022 Capital Improvement Program

- Airfield and Terminal Modernization Program (ATMP)
 - Concourse 0 - Terminal 9 - Roadways - Airfields
- Cargo Modernization
- Terminal Development
- Landside Access Modernization Program
- Land Improvements
- Landscaping
- Wayfinding
- Van Nuys & Palmdale

Contracting Forecast 2023

Contracting Opportunities

Multiple Award Task Order Contracts (MATOC):

- Construction/Design Build
- Architecture and Engineering
- Program Services
- Environmental Planning (NEPA / CEQA)

Major Programs and Projects:

- Terminal 9 Project
- Airside Projects
- Wayfinding Program

Multiple Award Task Order Contract (MATOC) Opportunities

Overview

- Planning & Design
- Program Services
- Environmental Planning Services
- Construction Services (DBB and DB delivery)
- Multiple Award / Small Business Participation

Schedule

Planning & Design RFP:
Posting: Q2 2023 (June)*
Proposals Due: Q3 2023*

Program Services RFP:
Posting: Q2 2023 (April)*
Proposals Due: Q3 2023*

Construction RFP:
Posting: Q2 2023 (June)*
Proposals Due: Q3 2023*

Environmental RFP:
Posting: Q1 2023 (March)*
Proposals Due: Q2 2023*

*** Estimated Dates**

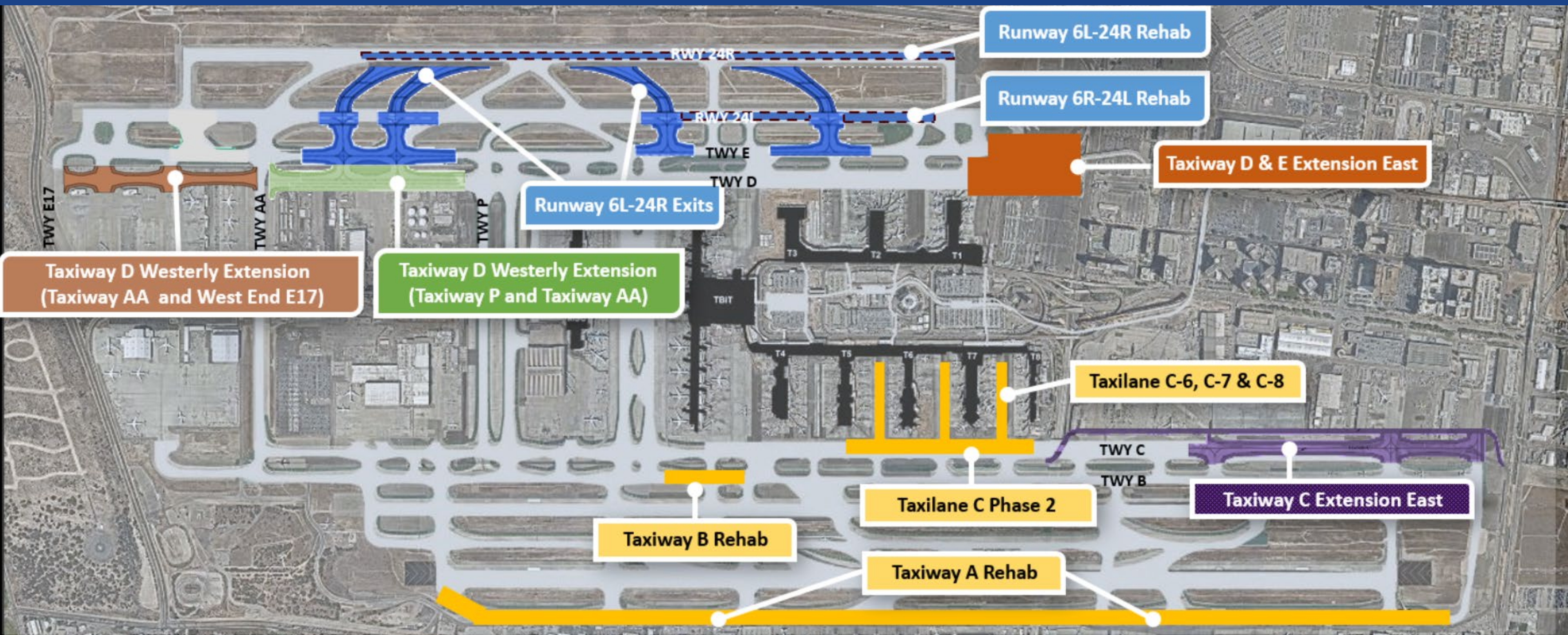
Terminal 9



LOS ANGELES WORLD AIRPORTS

LAX

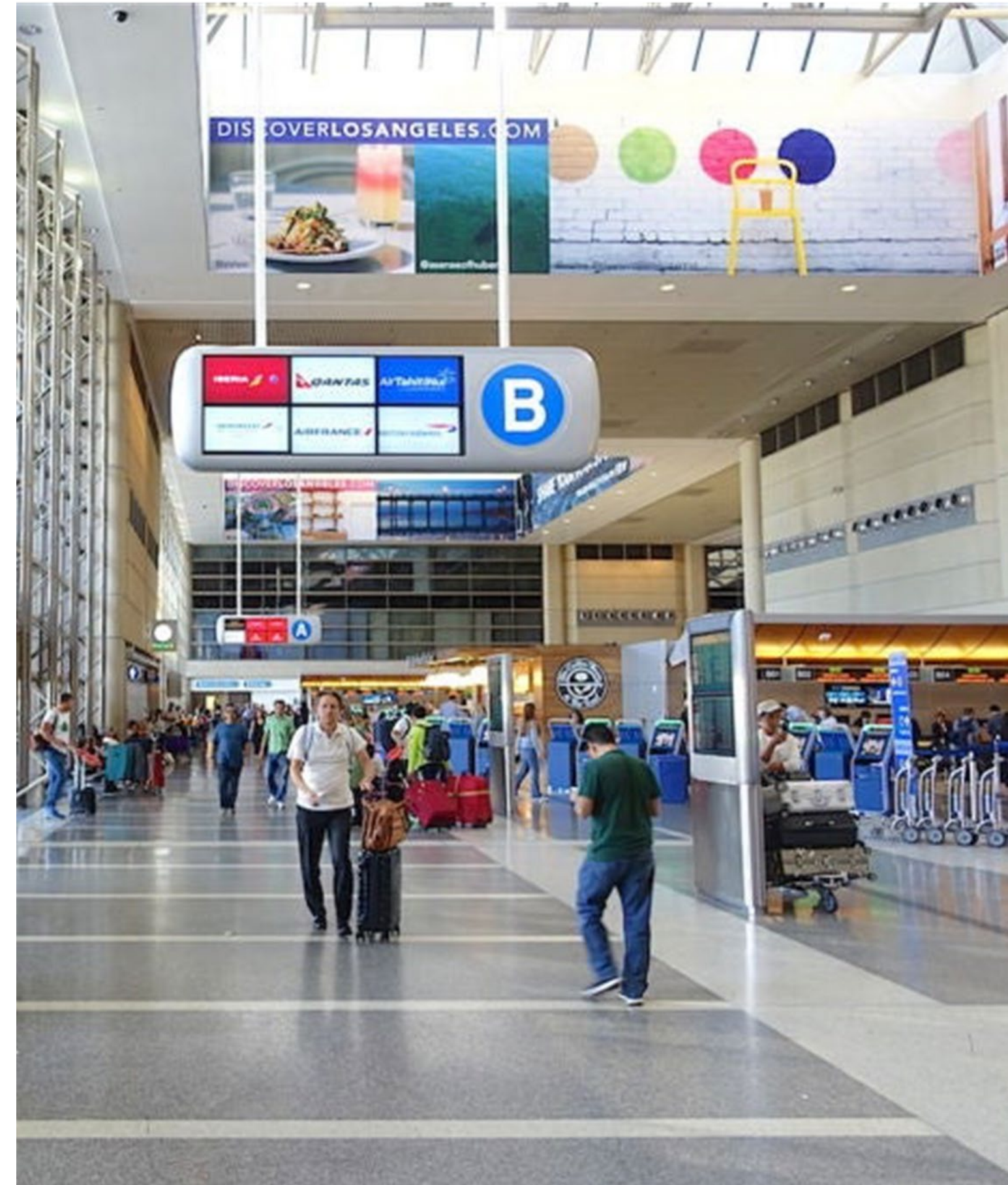
Airfield Improvement Program



Signage & Wayfinding Enhancement Program

Overview

- LAWA is seeking to deliver a series of new signage & wayfinding improvements throughout LAX, thereby creating an intuitive guest experience navigating to & through the LAX Campus.
- Includes all facets of the journey:
 - Virtual gateways
 - APM and associated facilities
 - Roadways
 - Parking
 - Curbside
 - Terminals
 - Concessions
 - Gates
- Includes the development of an airport-wide implementation and prioritization plan for all signage upgrades
 - Digital
 - Static
 - Architectural Elements
 - Super Graphics
 - Dynamic
 - Interactive signs
 - Terminal directories
 - Displays



Enabling Projects

- Roads
- North Airfield Program
- South Airfield Program
- Concourse 0
- Terminal 9
- LAMP - RUE Phase 3
- Cargo Modernization Program



Economic Impact: Inclusivity & Workforce Development

- XBE Participation
- Mentor Protégé
- Partnering
- Capacity Building
- HireLAX Apprenticeship Readiness Program
- Local Worker Hiring
- Internships

Accessing Opportunities

Most LAW A procurements, including all competitive pursuits for Development, are posted on the Regional Alliance Marketplace for Procurement (www.rampla.org)

Registered firms can find all opportunities advertised by LAW A, and gain access to relevant solicitation documents

Registered firms can also receive notifications when a new project, or an update to an already advertised project, occurs in their area of business

RAMP LA also host opportunities from all City of Los Angeles Departments

LAW A also posts a listing of anticipated projects on its website under "Current Opportunities" (lawa.org)



Opportunities

Displaying 1 - 10 of 250 records

No	Opportunity ↕	Organization ↕	Post Date ↕	Due Date ↕	
1	Supply and Installation of Various Architectural Metal Coverings, Wainscoting, and Column Wraps at LAX & VNY Airport	Airports, Los Angeles World	1/5/2023	2/9/2023	▼
2	Medium Voltage Repair, Training, Preventative Maintenance (PM) and Support Services at LAX & VNY	Airports, Los Angeles World	1/6/2023	2/2/2023	▼

LAWA Current Opportunities

[Home](#) / [Businesses](#) / [LAWA Current Opportunities](#)

CURRENT OPPORTUNITIES

Please go to **RAMP.LA.ORG** for open competitive opportunities

[Contract Status Report\(Updated December 2022\)](#)

[Upcoming Procurements](#)



Questions?

JOIN US!



[Register](#)

LAX \$30B CAPITAL IMPROVEMENT PROGRAM

THURSDAY, APRIL 6TH
5 PM - 7 PM



TERRI MESTAS
Chief Development Officer

- On-Call Construction Contracts
- Meet LAWA Primes
- New Mentor Protege Program
- Prompt Payment

LAX AIRPORT POLICE FACILITY
COMMUNITY ROOM
9160 Loyola Blvd.
Los Angeles, CA 90045
Free special event parking available.



LAX Terminal 9 Industry Showcase

SAVE THE DATE

APRIL 14, 2023 9:00 AM - 12:00 PM

LAWA's Largest Multi-Billion Dollar Project

- New ~1.4M SqFt International, Common-Use Terminal Facility
- Domestic/International Gates
- Dedicated Parking Structure (550 spaces)
- Automated People Mover Station

8:00 AM Registration Opens
9:00 AM Project Scope Presentation
10:00 AM Networking and Team Connections



LAWA | **LAX VNY**

[REGISTER](#)

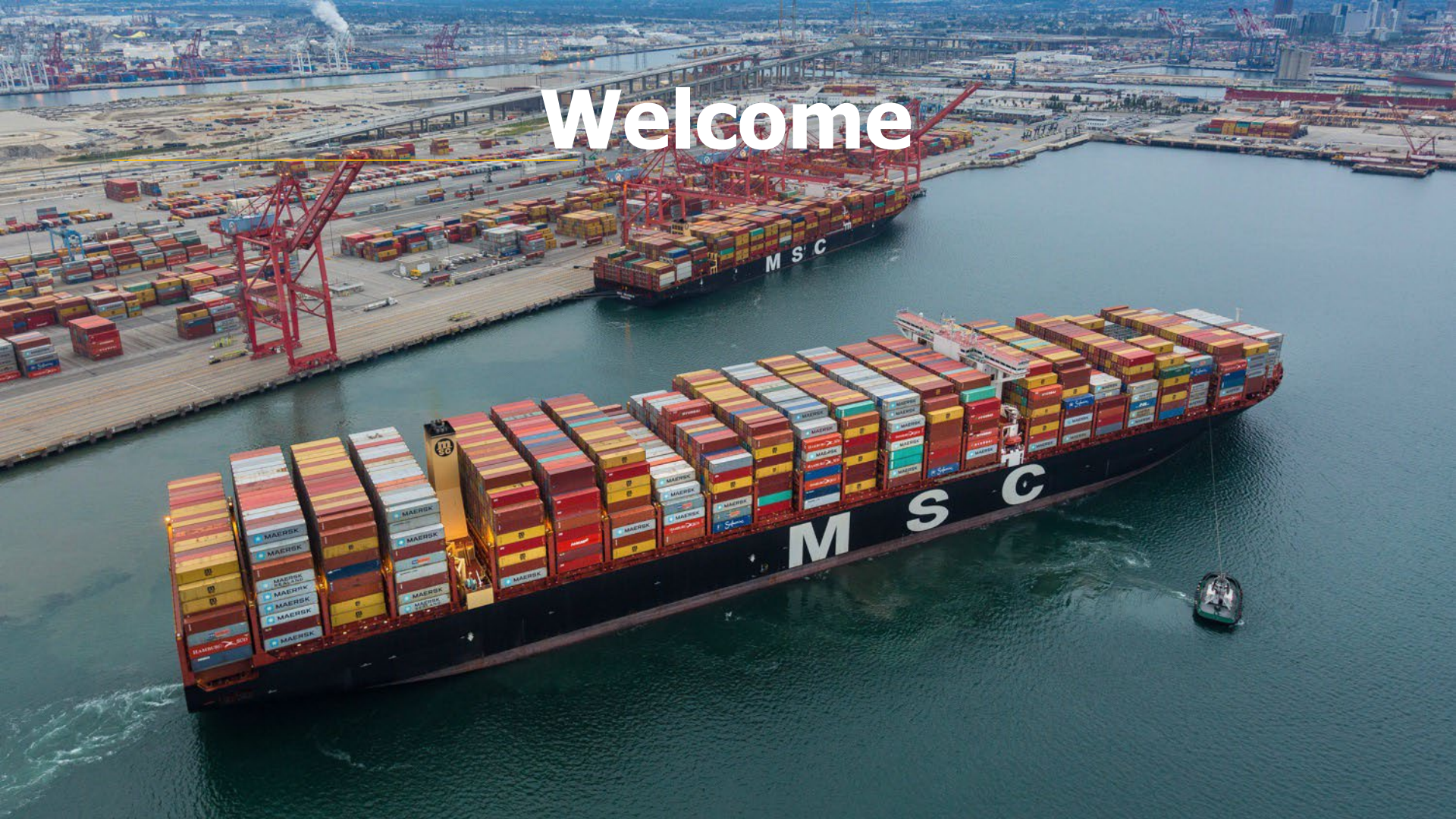
How To Do Business with POLB

March 20, 2023

Agenda

- Welcome
- POLB Overview
- Capital Projects
- Equity in Infrastructure
- SBE Program Overview

Welcome



LONG BEACH BOARD OF HARBOR COMMISSIONERS



SHARON L. WEISSMAN
President



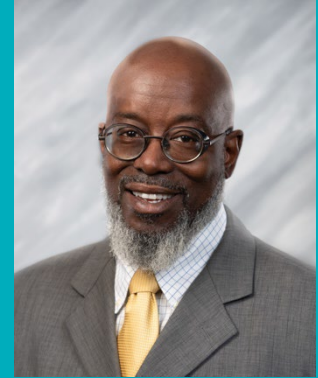
BOBBY OLVERA JR.
Vice President



BONNIE LOWENTHAL
Secretary



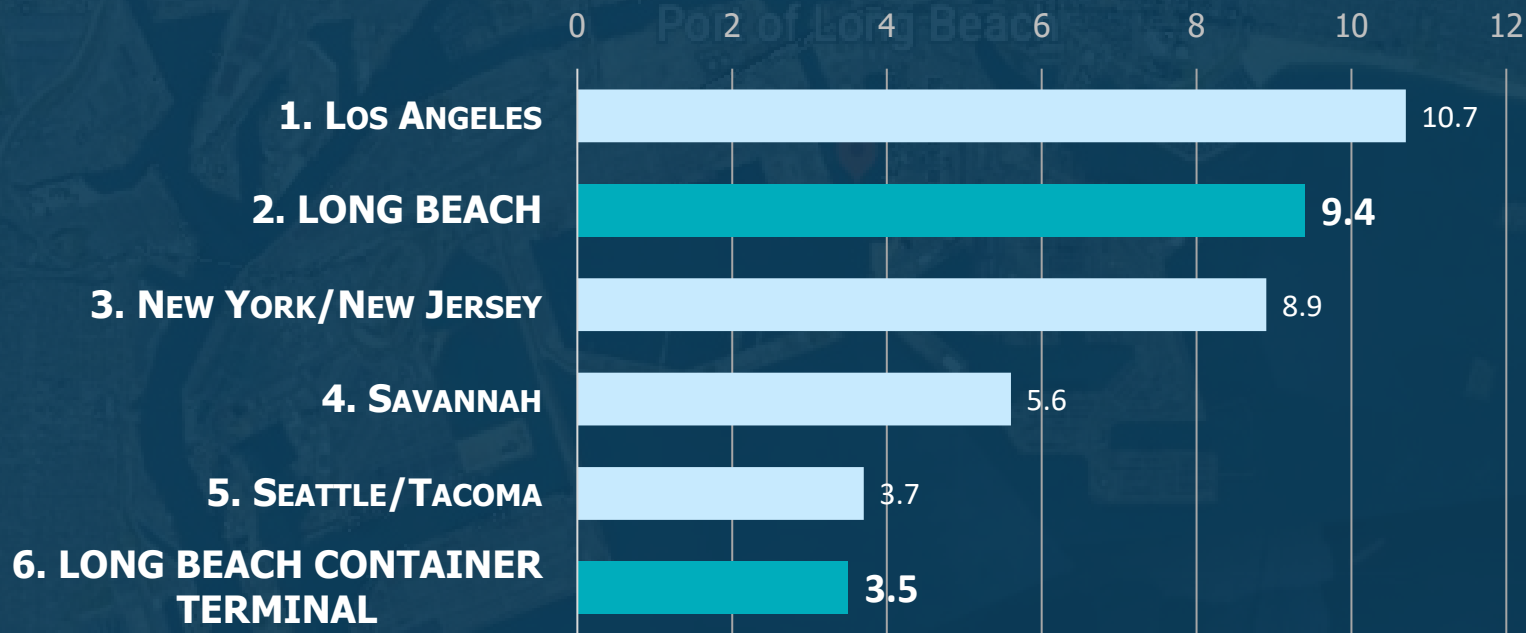
FRANK COLONNA
Commissioner



STEVEN NEAL
Commissioner

BUSIEST U.S. PORTS

TEUS IN 2021

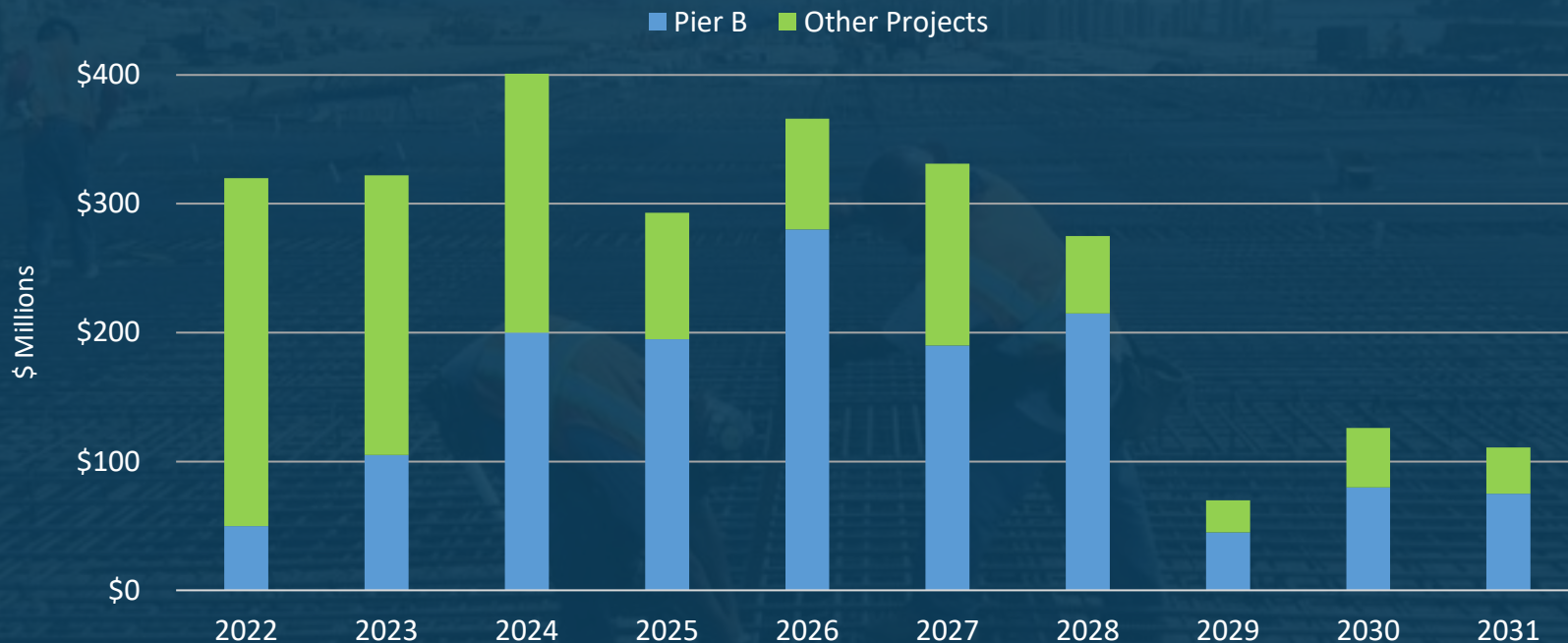


*Millions of twenty-foot equivalent units (TEUs) or 20-foot-long containers

Capital Projects Outlook

- INCREASE TERMINAL CAPACITY
- INCREASE RAIL CAPACITY
- IMPROVE OPERATIONAL EFFICIENCY
- IMPLEMENT ZERO-EMISSIONS INFRASTRUCTURE

Port of **LONG BEACH**
\$2.6 BILLION in CAPITAL PROJECTS
FY 2022-2031



NEXT-GEN YARD EQUIPMENT

ZERO-EMISSION CRANES AND TRACTORS



An aerial photograph of the On-Dock Rail Pier B Rail Support Facility. The facility is outlined in yellow and features several key components: 5 New Arrival and Departure tracks, a 93,000-foot Support Yard, a Resupply Station for up to 30 Locomotives, and a section for Realignment and Improvement of Pier B St. & Pico Ave. The facility is situated near a large industrial area with numerous white storage tanks and a highway interchange. The background shows a dense urban landscape with a river and a bridge.

5 New Arrival and
Departure tracks

93,000 –feet
Support Yard

Resupply Station for
up to **30** Locomotives

Realign & Improve
Pier B St. & Pico Ave.

ON-DOCK RAIL

PIER B RAIL SUPPORT FACILITY



EQUITY IN INFRASTRUCTURE PROJECT

- Increase Prime & Subcontracting Opportunities for HUBs
- Provide Access to Capital
- Encourage Joint Venture & Equity Partnership Opportunities
- Streamline Contract Administration, Prompt Payment and Certification Processes to Reduce Barriers to Competition
- Encourage Cross-Agency Collaboration to Widen the Pool of Certified Contractors

Examples of Anticipated Upcoming Needs

Construction

- Asphalt paving & striping
- Recycling of asphalt & concrete
- Wharf repairs
- Concrete repairs
- Demolition
- Landscape restoration
- Conduit & conductors work
- Electrical testing
- Concrete demolish & removal

Services

- Professional Services
 - Grant consulting services
 - Project control services
 - Risk assessment services
 - Environmental services
- Non-Professional Services
 - Diving services
 - Hazardous waste management
 - Plumbing services
 - Vehicle washing

Goods

- Uniforms
- Patrol equipment
- Promotional products
- Office supplies & equipment
- Vehicles & other equipment
- Print materials
- Construction supplies & equipment
- Computer & telephone parts/supplies
- Tools, general parts & supplies

POLB Vendor Portal Features

Most procurements are publicly posted in the Port's online procurement system: **PlanetBids**

NEW VENDOR REGISTRATION

- Create a Vendor Profile
- Apply for SBE Certification

BID OPPORTUNITIES

- View/Download Bid Documents
- Attend Pre-Bid Meetings
- Submit/View Vendor Q&A
- View Addendas/Emails
- Submit Electronic Bids



MY CONTRACTS

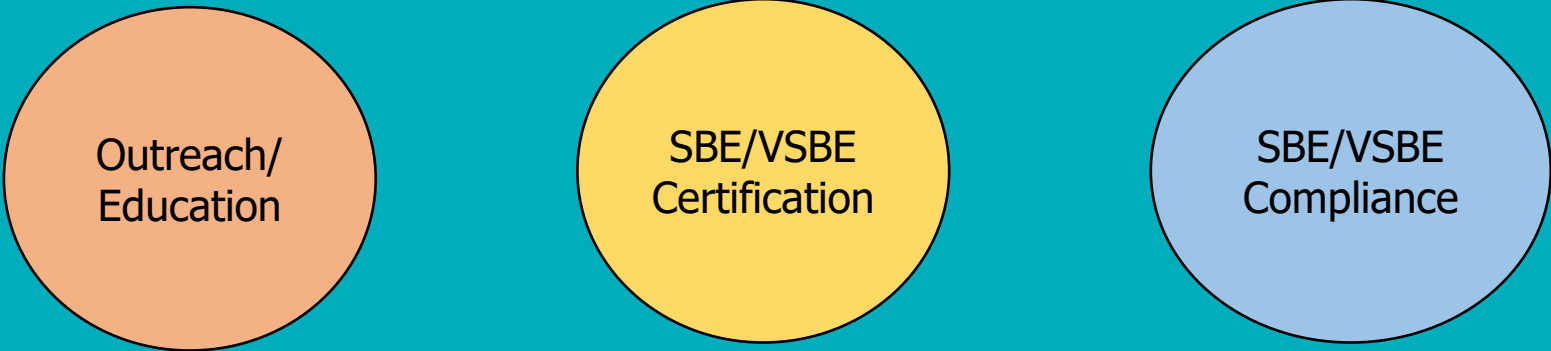
- Once awarded a contract:
 - Report SBE/VSBE Utilization
 - Add subcontractors
 - Run reports/charts

FIND CERTIFIED VENDORS

- Port Certified SBE/VSBE Firms
- View Other Self-Reported Classifications/Certifications
 - DVBE, DGS, Micro, MBE, WBE

SBE Program Overview

- SBE Ordinance adopted in October 2004
- Goal is to promote participation of SBEs/VSBEs on Port contracts and procurements by setting SBE/VSBE participation goals
- FY21 department-wide SBE/VSBE participation rate was 40.8%, exceeding the goal of 27%



Outreach/
Education

SBE/VSBE
Certification

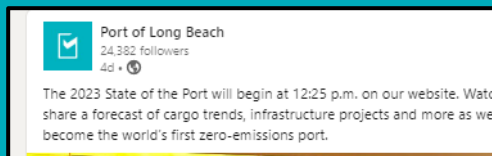
SBE/VSBE
Compliance

www.polb.com/sbe

SBE Outreach/Education

POLB conducts business outreach/education through a variety of methods:

- Planet Bids News & Events Section
- Email blasts to Vendors via Planet Bids
- Port of Long Beach Social Media
 - Facebook, LinkedIn, Twitter, Instagram
- City of Long Beach Business Brief
- Vendor booths at events
- SBE/DBE Workshops



Click here to view in your web browser

Go to the Economic Development Business Brief! We are continuing to be updated on the latest business resources and news.

EN ESPAÑOL

Are you a small business looking for new opportunities?

Port of Long Beach needs small businesses to partner with, to build, service the 2nd largest Port in the United States. Small businesses dollars as primes and/or sub-contractors on Port contracts.

Opportunities are available for a variety of contract types, such as supplies, landscaping, recycling services, technology hardware, even food services. Visit the Port's **Business Opportunities** page to download a sampling of products/services procured by each

Port of Long Beach Small Business Enterprise / Very Small Business Enterprise (VSBE) Program

The main goal of the SBE/VSBE Program is to promote participation of SBEs and VSBEs on Port contracts and procurements, via prime and subcontracting opportunities. The Port has a 27% annual department-wide goal which is achieved by setting minimum SBE and VSBE participation goals for applicable construction and professional services contracts, and bureau-wide and/or division-wide SBE/VSBE goals on applicable purchases. Learn more about the Port's SBE/VSBE Program at polb.com/sbe.

News & Events

Stay informed with the latest news and events!

METWORKS Industry Day In-Person Event on 2/2/2023

January 26, 2023

Join the Metropolitan Water District at its METWORKS Industry Day! The goal of Metropolitan's Industry Day is to provide the construction and consulting community an opportunity to foster partnerships while becoming informed on potential upcoming contracting opportunities with our Pure Water Southern California reuse program and our drought sustainability projects which are currently planned to utilize a combination of Alternative Project Delivery and traditional design approaches.

Learn about: Pure Water SoCal consulting & construction opportunities, our recently adopted Project Labor Agreement (PLA), Drought Sustainability Projects, and Metropolitan's initial plan to utilize Alternative Project Delivery techniques. Meet: Metropolitan's Construction Management and Project Management Staff.

Date: Thursday, February 2, 2023
Time: 8:00AM - 11:30AM
Location: Carson Event Center, 801 Carson Street, Carson, CA 90745
Cost: Free
Register at <https://www.eventbrite.com/e/metworks-industry-day-in-person-event-tickets-461123792677>

METWORKS Industry Day In-Person Event on 2/2/2023

PlanetBids <CustomerCare@planetbids.com>
to: SBE Program

This is an automated email notification. Please do not reply.

Dear Sample Vendor- POLB,

Join the Metropolitan Water District at the METWORKS Industry Day! The goal of Metropolitan's Industry Day is to provide the construction and consulting community an opportunity to foster partnerships while becoming informed on potential upcoming contracting opportunities with our Pure Water Southern California reuse program and our drought sustainability projects which are currently planned to utilize a combination of Alternative Project Delivery and traditional design approaches.

Learn about: Pure Water SoCal consulting & construction opportunities, our recently adopted Project Labor Agreement (PLA), Drought Sustainability Projects, and Metropolitan's initial plan to utilize Alternative Project Delivery techniques. Meet: Metropolitan's Construction Management and Project Management Staff.

Date: Thursday, February 2, 2023
Time: 8:00AM - 11:30AM
Location: Carson Event Center, 801 Carson Street, Carson, CA 90745
Cost: Free
Register at <https://www.eventbrite.com/e/metworks-industry-day-in-person-event-tickets-461123792677>

Attachments(0):
[Metworks Industry Day Report\(2\).pdf](#)

Thank you,
Port of Long Beach

SBE/VSBE Certification

- All businesses wishing to receive SBE/VSBE status on a Port contract are required to be certified by either the Port or by the DGS.
- Port SBE certifications are valid for three (3) years. The Port does not issue separate VSBE certifications. VSBE status is designated in a vendor's procurement system account.
- To get certified, businesses should follow these steps:
 - Access the POLB Vendor Portal through the Port's SBE website at www.polb.com/sbe
 - Complete the Small Business Certification tab



Registration
Assistance
Available After
Event



Port of
LONG BEACH
THE PORT OF CHOICE

THANK YOU

